



# **SAFETY TRAINING PROGRAM DETAILS**



**MEMBER OF NATIONAL SAFETY COUNCIL**

# **SAFECON INDIA**

**AN ISO 9001 : 2015 & ISO 45001 : 2018 CERTIFIED COMPANY**

 [safeconin@gmail.com](mailto:safeconin@gmail.com)

 [www.safeconindia.in](http://www.safeconindia.in)



# **OBJECTIVE:**

## **THE SAFETY TRAINING AIM TO CONTRIBUTE TOWARDS:**

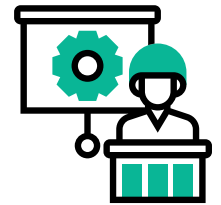
- Protecting workers in the iron and steel industry from workplace hazards.
- Preventing work related injuries and incidents.
- Assisting and facilitating the improved management of occupational safety issues of the workplace.
- Improving knowledge and competence.

# SAFETY MANAGEMENT



- TARGET GROUP** : Sr.Manager , Managers & Executives
- PROGRAMME CONTENT** : Safety Policy, Safety organization, Safety committee, Safety suggestion, HSE data audit.

# SAFETY INDUCTION TRAINING



- TARGET GROUP** : Sr.Manager , Managers & Executives, Contract workman, Permanent workman
- PROGRAMME CONTENT** : General safety rules. Do's and don'ts. Action to be taken in case of emergency.

# SAFETY POLICY



- TARGET GROUP** : Contract workman, Permanent workman
- PROGRAMME CONTENT** : Understanding of policy, contents and implementation.

# INCIDENT REPORTING AND INVESTIGATION



- TARGET GROUP** : Sr.Manager , Managers & Executives
- PROGRAMME CONTENT** : First aid, reportable accident, near miss, dangerous incident, investigation, root cause analysis and reporting.

# USE OF PERSONNEL PROTECTIVE EQUIPMENT



- TARGET GROUP** : Sr.Manager , Managers & Executives,Contract workman,Permanent workman.
- PROGRAMME CONTENT** : Preparation of PPE matrix, selection and use.

# PERMIT TO WORK



- TARGET GROUP** : Sr.Manager , Managers & Executives, Contract workman, Permanent workman
- PROGRAMME CONTENT** : Different types of permits. Permit issue, closure and recording.

# WORK AT HEIGHT



- TARGET GROUP** : Sr.Manager , Managers & Executives, Contract workman, Permanent workman
- PROGRAMME CONTENT** : Definition. Work at height list. Work at height permit. PPE required. Rescue.

# RESCUE DURING WORK AT HEIGHT

- TARGET GROUP** : Executives, Contract workman, Permanent workman
- PROGRAMME CONTENT** : Rescue equipment selection and use. Rescue team.





# WORK AT CONFINED SPACE



## TARGET GROUP

: Sr.Manager , Managers & Executives,Contract workman,Permanent workman.

## PROGRAMME CONTENT

: Definition, types, confined space hazards, confined space entry and work procedure. Recur from confined space.

# ILLUMINATION AT WORKPLACE



## TARGET GROUP

: Sr.Manager , Managers & Executives.

## PROGRAMME CONTENT

: Illumination standard. Illumination measurement and compliance.

# GAS CUTTING AND GAS WELDING



## TARGET GROUP

: Contract workman, Permanent workman

## PROGRAMME CONTENT

: Hazards in gas cutting and gas welding operation. Dos and don'ts. PPE requirement.

# ARC WELDING AND ARC CUTTING



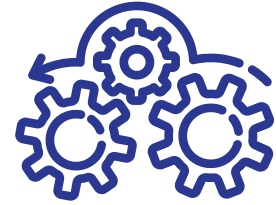
## TARGET GROUP

: Contract workman, Permanent workman

## PROGRAMME CONTENT

: Hazards in arc welding and arc cutting operation. Dos and don'ts. PPE requirement.

# EQUIPMENT AND MACHINERY GUARDING



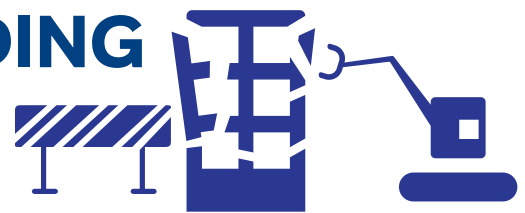
- TARGET GROUP** : Sr.Manager , Managers & Executives,Contract workman,Permanent workman.
- PROGRAMME CONTENT** : Types of guarding, List of guarding. Monthly inspection checklist.

## BARRICADING



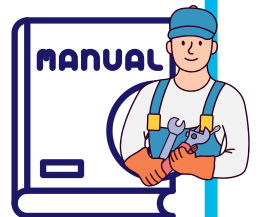
- TARGET GROUP** : Executives,Contract workman,Permanent workman.
- PROGRAMME CONTENT** : Types of barricading & Inspection.

## DEMOLITION OF BUILDING AND STRUCTURE



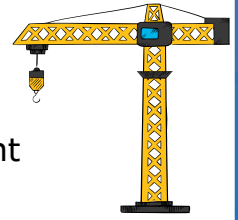
- TARGET GROUP** : Executives,Contract workman,Permanent workman.
- PROGRAMME CONTENT** : Barricading, PPE requirement, demolition machinery inspection and use.

## MATERIAL HANDLING (MANUAL & MECHANIZED) AND STORAGE



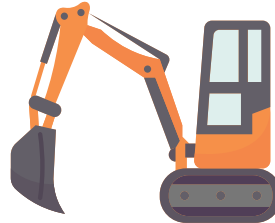
- TARGET GROUP** : Executives,Contract workman,Permanent workman.
- PROGRAMME CONTENT** : Preparation of list of material Handling (manual & mechanized) and storage. Safe handling and storage procedure. PPE requirement.

# WORK ON ELECTRICAL OVERHEAD TRAVELLING (EOT) CRANE



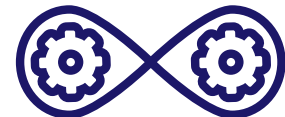
- TARGET GROUP** : Executives, Contract workman, Permanent workman.
- PROGRAMME CONTENT** : Identification and control of hazards in working (EOT), PPE requirement.

## EXCAVATION



- TARGET GROUP** : Executives, Contract workman, Permanent workman.
- PROGRAMME CONTENT** : Different types of safety measure required during excavation. PPE requirement.

## OPERATION AND MAINTENANCE OF CONVEYOR BELTS



- TARGET GROUP** : Executives, Contract workman, Permanent workman.
- PROGRAMME CONTENT** : Different types of safety measure required during operation and maintenance of conveyor belt. PPE requirement.

## OXYGEN AND NITROGEN GAS LINES



- TARGET GROUP** : Executives, Contract workman, Permanent workman.
- PROGRAMME CONTENT** : Hazards in Oxygen and Nitrogen gas lines. PPE requirement.

# HANDLING OF FLUE GASES



- TARGET GROUP** : Executives, Contract workman, Permanent workman.
- PROGRAMME CONTENT** : Hazards in handling of flue gas lines. PPE requirement.

# SAFE HANDLING OF LIQUID METALS.



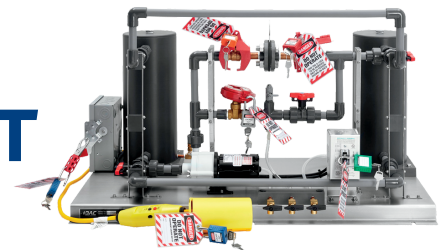
- TARGET GROUP** : Executives, Contract workman, Permanent workman.
- PROGRAMME CONTENT** : Hazards in handling of liquid metals. PPE requirement.

# LOCO OPERATION



- TARGET GROUP** : Executives, Contract workman, Permanent workman.
- PROGRAMME CONTENT** : Hazards in Loco operation. PPE requirement.

# LOCK OUT AND TAG OUT



- TARGET GROUP** : Executives, Contract workman, Permanent workman.
- PROGRAMME CONTENT** : Understanding of Lock out and Tag out procedure and implementation.



# ELECTRICAL SAFETY



- TARGET GROUP** : Executives, Contract workman, Permanent workman.
- PROGRAMME CONTENT** : Hazards in electrical work. Isolation, tools inspection, license requirement. PPE requirement and certification. Instrument calibration.

# ERGONOMICS (MANUAL HANDLING)



- TARGET GROUP** : Contract workman, Permanent workman.
- PROGRAMME CONTENT** : List of manual handling. Safe way of manual handling.

# EXPLOSIVE ATMOSPHERE



- TARGET GROUP** : Sr. Manager , Managers & Executives.
- PROGRAMME CONTENT** : Understanding of explosive atmosphere. Zoning and safety requirement.

# FIRE (PERVERSION AND CONTROL)



- TARGET GROUP** : Sr. Manager , Managers & Executives.
- PROGRAMME CONTENT** : Measures to be taken for Fire (Perversion and control)

# EMERGENCY PREPAREDNESS ON SITE EMERGENCY PLAN



**TARGET GROUP** : Sr.Manager , Managers & Executives, Security .

**PROGRAMME CONTENT** : Emergency response team and their function during emergency

# GAS CYLINDER (STORAGE, HANDLING AND USE )



**TARGET GROUP** : Executives, Contract workman,Permanent workman.

**PROGRAMME CONTENT** : Hazard in Gas Cylinder (Storage, handling and use), control measure and PPE requirement.

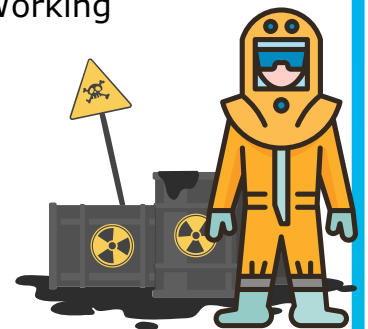
# LIFTING OPERATION AND COLLAPSING LOADS



**TARGET GROUP** : Executives, Contract workman, Permanent workman.

**PROGRAMME CONTENT** : List of lifting work. Hazard in lifting operation. Inspection of lifting machinery. Working procedure. PPE requirement.

# MANAGEMENT OF HAZARDOUS SUBSTANCES



**TARGET GROUP** : Sr.Manager , Managers & Executives.

**PROGRAMME CONTENT** : List of hazardous substance. Safety requirement during storage, handling and use. PPE requirement.

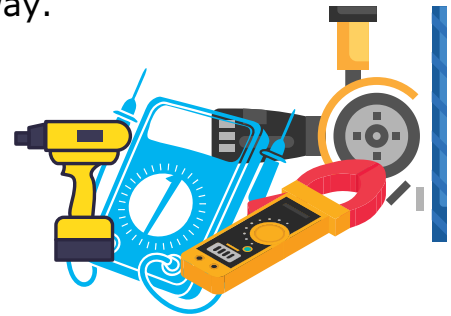
# ON SITE TRAFFIC MANAGEMENT



**TARGET GROUP** : Sr.Manager , Managers & Executives, Security .

**PROGRAMME CONTENT** : On site traffic plan. Speed limit. Vehicle checklist . Signage. Safety rule for drivers. Use of wheel chock. Pedestrian pathway.

# PORTABLE ELECTRICAL EQUIPMENT



**TARGET GROUP** : Executives, Contract workman,Permanent workman.

**PROGRAMME CONTENT** : List of portable electrical equipment. Pre use checklist. Inspection.PPE requirement.

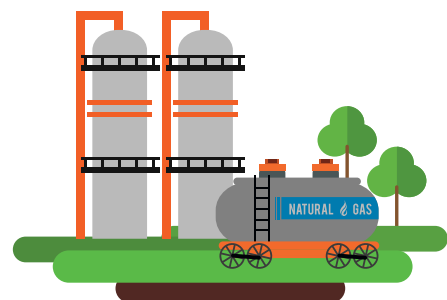
# PERSONAL PROTECTIVE EQUIPMENT



**TARGET GROUP** : Sr.Manager , Managers & Executives, Contract workman, Permanent workman.

**PROGRAMME CONTENT** : Preparation of PPE matrix. Selection and use of PPE.

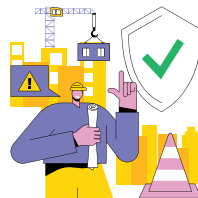
# PRESSURE VESSEL



**TARGET GROUP** : Sr.Manager , Managers & Executives.

**PROGRAMME CONTENT** : Definition as per rule. Inspection and testing of pressure plant.

# RISK ASSESSMENT AND CONTROLS



- TARGET GROUP** : Sr.Manager , Managers & Executives.
- PROGRAMME CONTENT** : Hazard identification. Risk calculation and provision of control measure to bring down the risk to low level.

# STORAGE AND HANDLING OF PETROLEUM PRODUCTS



- TARGET GROUP** : Sr.Manager , Managers & Executives, Contract workman,Permanent workman.
- PROGRAMME CONTENT** : Hazard in petroleum product. Safety precaution.PPE requirement.

# MANAGEMENT OF CONTRACTORS



- TARGET GROUP** : Sr.Manager , Managers & Executives.
- PROGRAMME CONTENT** : Contractor training. Contractor workman health check up. Induction training before joining.PPE requirement.

# CONSTRUCTION SAFETY



- TARGET GROUP** : Sr.Manager , Managers & Executives, Contract workman,Permanent workman.
- PROGRAMME CONTENT** : Hazards in construction work. Safety measure. Barricading, signage, scaffolding. PPE requirement.



# NOISE EMISSION



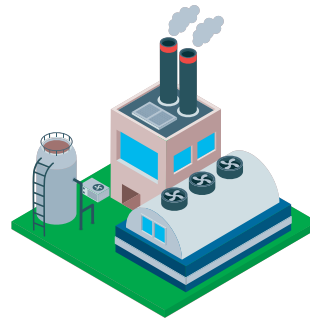
- TARGET GROUP** : Sr.Manager , Managers & Executives.
- PROGRAMME CONTENT** : Definition. Noise measurement in work area and control. Requirement of PPE.

# USE OF PORTABLE FIRE EXTINGUISHERS



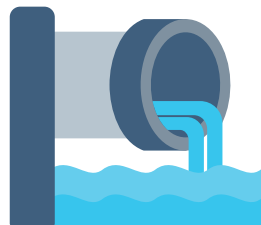
- TARGET GROUP** : Sr.Manager , Managers & Executives, Contract workman,Permanent workman.
- PROGRAMME CONTENT** : How to use portable fire extinguishers.

# AIR EMISSION AND CONTROLS



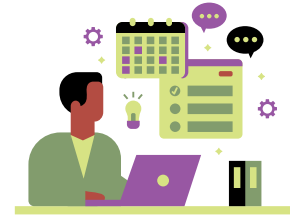
- TARGET GROUP** : Sr.Manager , Managers & Executives.
- PROGRAMME CONTENT** : Types of air emission. Measurement and control measure.

# EFFLUENTS



- TARGET GROUP** : Sr.Manager , Managers & Executives.
- PROGRAMME CONTENT** : Hazards in construction work. Safety measure. Barricading, signage, scaffolding. PPE requirement.

# ENERGY MANAGEMENT



**TARGET GROUP** : Sr.Manager , Managers & Executives.

**PROGRAMME CONTENT** : Different tippers of energy used in the industry.  
Present consumption Vs standard consumption.  
Use of energy efficient equipment.

# WASTE MANAGEMENT



**TARGET GROUP** : Sr.Manager , Managers & Executives.

**PROGRAMME CONTENT** : Identification of waste. Bio degradable, non bio degradable and hazardous waste.